



elevate
reserve

Development Manager

elevate
homes

Hines

conscient⁷

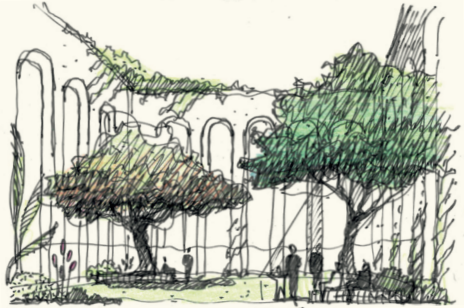
Escape Gurugram.
In Gurugram.

This is more than a home.
It's a little world of serenity
that envelops you with
warmth, ease, and comfort,
leaving the city at the gates.

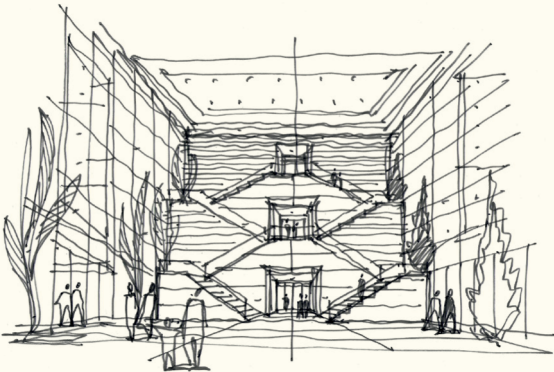
Exclusive apartments imagined by globally renowned architect in the heart of Gurugram.



◆ The Entrance



◆ Summer Pavilion



◆ Clubhouse

We don't just offer
great homes and
amenities.

We offer a better
quality of life.



A lush sanctuary inside.
A sprawling city outside.

ARTISTIC IMPRESSION



Towering Colonnades.
Sprawling Courtyards.

ARTISTIC IMPRESSION



Spanish Architecture.
Indian Spirit.

ARTISTIC IMPRESSION



Tropical Modernism.
Nature meets Architecture.

ARTISTIC IMPRESSION

Welcome to a special world,
like an oasis in the desert.

LOCATION

♥ Sec 62, Golf Course Extension

Nestled in a prime location off Golf Course Ext. Road, this project offers superb connectivity to Gurugram and Delhi.

It's part of a great neighbourhood and is surrounded by upscale developments, luxury hotels and retail hubs.

LEGEND

SCHOOLS

Heritage School
DPS International School
Shiv Nadar School
The Shri Ram School

MEDICAL FACILITIES

Artemis Hospital
Paras Hospital
Fortis Hospital
Max Hospital
Medanta - The Medicity

DISTANCES

(APPROX)

2 mins.
10 mins.
15 mins.
20 mins.

10 mins.
15 mins.
20 mins.
20 mins.

SUKHRAJI

LEGEND

SHOPPING & EATERIES

Café Dori
Bellagio
Worldmark
Spencers
Horizon Plaza

CONNECTIVITY

Golf Course Road
Metro Station
Sohna Road
IGI Airport

DISTANCES

(APPROX)

5 mins.
6 mins.
7 mins.
7 mins.
12 mins.

2 mins.
2 mins.
10 mins.
30 mins.



Map not to scale. The map is not necessarily accurate to the surveying or engineering standards. The map shown here is for illustration purposes only. It does not represent the ground survey and represents only the approximate relative location and boundaries. The location map depicts an indicative and selective representation of certain key developments around the Project. However, the Developer makes no representation regarding continuity / existence of these developments / landmarks going forward. Further, the driving time indicated is tentative and actual time vary, depending upon traffic and other conditions.

About Us

Hines and Conscient
have partnered to develop
high end properties that will
redefine benchmarks of
luxury and vibrant community
living in India.

conscient⁷

At Conscient, we create not just buildings or homes, but a lifestyle that epitomizes soulful living. The innovative & sustainable designs, high standards of delivery and quality, transparency and reliability have helped us achieve what we most believe in - Excellence.

This belief, in conjunction with most skillful and competent teams, and our world class associates in Architecture, Partners, Consultants, have been instrumental in delivering over 12,000 homes across Delhi-NCR, Dehradun & Goa in the last 5 decades.

In constant pursuit of Excellence, Conscient is currently building over 12+ million square feet of world class Premium Condominiums, Luxury Villas, Commercial/Retail and Value Housing across more than 10 projects.



♥ Elevate, Gurugram



♥ Heritage Max, Gurugram



♥ Arborea Luxury Homes, Dehradun

Hines

Hines is a privately owned global real estate investment, development and management firm, founded in 1957, with a presence in 383 cities in 30 countries and \$94.6 billion of investment assets under management and more than 101 million sq. ft. of assets for which Hines provides third-party property-level services.

Hines has 197 developments currently underway around the world, and historically, has developed, redeveloped or acquired 1,639 properties, totaling over 578 million sq. ft. The firm's current property and asset management portfolio includes 790 properties, representing over 268 million sq.ft. With extensive experience in investments across the risk spectrum and all property types, and a foundational commitment to ESG, Hines is one of the largest and most respected real estate organizations in the world.



Actual Image

📍 One Horizon Center, Gurugram



Actual Image

📍 One Museum Place, Shanghai



Actual Image

📍 Salesforce Tower, San Francisco

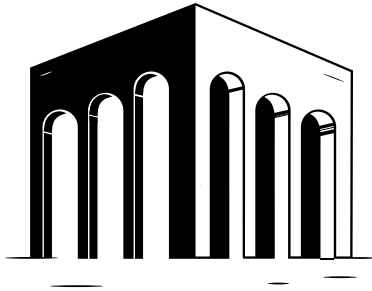


Hines, a global real estate investment, development and management firm and Conscient Infrastructure have collaborated to establish an integrated development management platform- Elevate Homes.

Our mission is to create world class developments with vibrant communities. At Elevate Homes, we intend to set new standards for quality, design, and customer satisfaction.

We are dedicated to setting benchmarks in the real estate industry, delivering unparalleled luxury and innovation in every project we undertake.

We look forward to seeing you.



📍 Global Business Park,
Tower D, 10th Floor, Gurugram

815-180-6000

info@elevatereserve.com

- Development Manager

elevate
homes

- HRERA 101 of 2023

Hines

| **conscient**⁷